

# Test Report

**Report No.** SCL01H08621400301

Page 1 of 5

**Applicant** ZHANGZHOU YINMEI PRINTING INK CO., LTD

**Address** DONGCHE VILLAGE , HUOTIAN TOWN, YUNXIAO COUNTY,  
ZHANGZHOU CITY , FUJIAN PROVINCE, CHINA

**The following sample(s) and sample information was/were submitted and identified by/on the behalf of the client**

Sample Name INK  
Part No. G432  
Color 10400  
Sample Received Date Oct. 10, 2015  
Testing Period Oct. 10, 2015 to Oct. 15, 2015

**Test Requested** As specified by client, to test Phthalates in the submitted sample(s).

**Test Method**

Test Item(s)	Test Method	Measured Equipment(s)
Phthalates	Refer to EN 14372:2004(E)	GC-MS

**Test Result(s)** Please refer to the following page(s).

 **Approved by** Terry  
Danny Liu  
Technical Manager  
Centre Testing International Group Co., Ltd.

**Reviewed by** Danna  
**Date** Oct. 15, 2015

No. R158921876

Hongwei Industrial Zone, Bao'an 70 District, Shenzhen, Guangdong, China

# Test Report

**Report No.** SCL01H08621400301

Page 2 of 5

**Test Result(s)**

Tested Item(s)	Result	MDL
<b>Phthalates</b>		
Dimethyl phthalate(DMP) CAS#:131-11-3	N.D.	50 mg/kg
Diethyl phthalate(DEP) CAS#:84-66-2	N.D.	50 mg/kg
Dipropyl phthalate(DPRP) CAS#:131-16-8	N.D.	50 mg/kg
Diisobutyl phthalate(DIBP) CAS#:84-69-5	N.D.	50 mg/kg
Dibutyl phthalate(DBP) CAS#:84-74-2	N.D.	50 mg/kg
Dipentyl phthalate(DPP) CAS#:131-18-0	N.D.	50 mg/kg
Diheptyl phthalate(DHP) CAS#:3648-21-3	N.D.	50 mg/kg
Butylbenzyl phthalate(BBP) CAS#:85-68-7	N.D.	50 mg/kg
Dicyclohexyl phthalate(DCHP) CAS#:84-61-7	N.D.	50 mg/kg
Di-2-ethylhexyl phthalate(DEHP) CAS#:117-81-7	N.D.	50 mg/kg
Diisooctyl phthalate(DIOP) CAS#:27554-26-3	N.D.	50 mg/kg
Di-n-octyl phthalate(DNOP) CAS#:117-84-0	N.D.	50 mg/kg
Diisononyl phthalate(DINP) CAS#:28553-12-0,68515-48-0	N.D.	50 mg/kg
Diisodecyl phthalate(DIDP) CAS#:26761-40-0,68515-49-1	N.D.	50 mg/kg
Dinonyl phthalate(DNP) CAS#:84-76-4	N.D.	50 mg/kg
Diisononyl adipate(DINA) CAS#:33703-08-1	N.D.	50 mg/kg
Diisopentyl phthalate (DIPP) CAS#:605-50-5	N.D.	50 mg/kg
Di-n-hexyl phthalate (DNHP) CAS#:84-75-3	N.D.	50 mg/kg
Dimethoxyethyl phthalate (DMEP) CAS#:117-82-8	N.D.	50 mg/kg

# Test Report

Report No. SCL01H08621400301

Page 3 of 5

Tested Item(s)	Result	MDL
<b>Phthalates</b>		
N-Pentyl-isopentyl phthalate (NIPP) CAS#:776297-69-9	N.D.	100 mg/kg
Diocetyl terephthalate (DOTP) CAS#:6422-86-2	N.D.	50 mg/kg
Dibenzyl phthalate (DBzP) CAS#:523-31-9	N.D.	50 mg/kg
Diphenyl phthalate (DPhP) CAS#:84-62-8	N.D.	50 mg/kg
Diallyl phthalate (DAP) CAS#:131-17-9	N.D.	50 mg/kg
Diundecyl phthalates(DUP) CAS#:3648-20-2	N.D.	50 mg/kg
Di(2-ethylhexyl) Adipate(DEHA) CAS#:103-23-1	N.D.	50 mg/kg
Di-iso-heptyl-phthalates(DIHpP) CAS#:41451-28-9	N.D.	50 mg/kg
Decyl octyl phthalate (nDnOP) CAS#:119-07-3	N.D.	50 mg/kg
Didecyl phthalate (DnDP) CAS#:84-77-5	N.D.	50 mg/kg
Di-iso-hexyl-phthalates (DIHxP) CAS#:146-50-9	N.D.	50 mg/kg
Ditridecyl phthalate (DITDP) CAS#:68515-47-9	N.D.	50 mg/kg
Ditrydecyl phthalates (DTDP) CAS#:119-06-2	N.D.	50 mg/kg
Dimethylterephthalates (DMT) CAS#:120-61-6	N.D.	50 mg/kg
Diisoundecyl phthalate (DIUP) CAS#:96507-86-7	N.D.	50 mg/kg
①Diundecyl phthalate, branched and linear CAS#:85507-79-5	N.D.	100 mg/kg
①1,2-Benzenedicarboxylic acid, di-(C7-11)-branched and linear alkyl esters (DHNUP) CAS#:68515-42-4	N.D.	100 mg/kg
①1,2-Benzenedicarboxylic acid, di-C6-8-branched alkyl esters, C7-rich(DIHP) CAS#:71888-89-6	N.D.	100 mg/kg
Bis(hydroxyethyl)terephthalate (BHET) CAS#:959-26-2	N.D.	50 mg/kg

# Test Report

Report No. SCL01H08621400301

Page 4 of 5

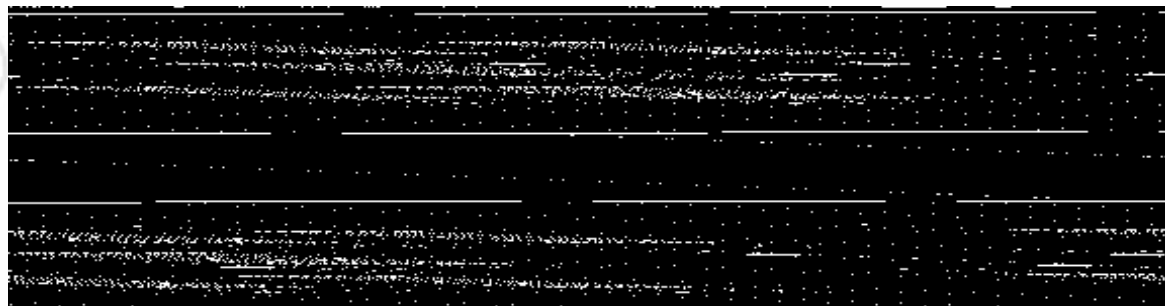
Tested Item(s)	Result	MDL
<b>Phthalates</b>		
1-Butyl 2-cyclohexyl phthalate (BCyP) CAS#:84-64-0	N.D.	50 mg/kg
Butyl decyl phthalates(BDP) CAS#:89-19-0	N.D.	50 mg/kg
Phthalic acid, bis(2-ethoxyethyl) ester (DEEP) CAS#:605-54-9	N.D.	50 mg/kg
Phthalic acid, bis(2-butoxyethyl) ester (DBEP) CAS#:117-83-9	N.D.	50 mg/kg
①1,2-Benzenedicarboxylic acid, dipentylester, branched and linear CAS#:84777-06-0	N.D.	100 mg/kg
①1,2-Benzenedicarboxylic acid, dihexyl ester, branched and linear CAS#:68515-50-4	N.D.	100 mg/kg
Butyl octyl phthalate(BOP) CAS#:84-78-6	N.D.	50 mg/kg
Hexyl 2-ethylhexyl phthalate(HEHP) CAS#:75673-16-4	N.D.	50 mg/kg

**Tested Sample/Part Description** White ink

**Remark:**

- MDL = Method Detection Limit
- N.D. = Not Detected (<MDL )
- mg/kg = ppm = parts per million
- ①: In view of the substances are established as UVCB substances (substances of unknown or variable composition, complex reaction products or biological materials) consisting of different and variable constituents, the test results are calculated based on the main constituents of the representative compounds for substances.
- The test result(s) is(are) presented in reference to the result(s) that reported in SCL01H086214003.

## Test Process



# Test Report

Report No. SCL01H08621400301

Page 5 of 5

## Photo(s) of the sample(s)



\*\*\* End of report \*\*\*

The test report is effective only with both signature and specialized stamp. The result(s) shown in this report refer only to the sample(s) tested. Without written approval of CTI, this report can't be reproduced except in full.