

Test Report

No. CANEC1603619705

Date: 18 Mar 2016

Page 1 of 5

ZHANGZHOU YINMEI PRINTING INK CO.,LTD

DONGCHE VILLAGE,HUOTIAN TOWN,YUNXIAO COUNTY,ZHANGZHOU CITY,FUJIAN PROVINCE
CHINA

The following sample(s) was/were submitted and identified on behalf of the clients as : INK

SGS Job No. : CP16-011009 - GZ

Client Ref. Info. : SEE REMARK

Date of Sample Received : 11 Mar 2016

Testing Period : 11 Mar 2016 - 17 Mar 2016

Test Requested : Selected test(s) as requested by client.

Test Method : Please refer to next page(s).

Test Results : Please refer to next page(s).

Signed for and on behalf of
SGS-CSTC Standards Technical Services Co., Ltd. Guangzhou Branch

violet

Violet,Shi
Approved Signatory



SGS-CSTC Standards Technical Services Co., Ltd.
Guangzhou Branch Testing Service Laboratory

Unless otherwise agreed in writing, this document is issued by the Company subject to its General Conditions of Service printed overleaf, available on request or accessible at <http://www.sgs.com/en/Terms-and-Conditions.aspx> and, for electronic format documents, subject to Terms and Conditions for Electronic Documents at <http://www.sgs.com/en/Terms-and-Conditions/Terms-e-Documents.aspx>. Attention is drawn to the limitation of liability, indemnification and jurisdiction issues defined therein. Any holder of this document is advised that information contained hereon reflects the Company's findings at the time of its intervention only and within the limits of Client's instructions, if any. The Company's sole responsibility is to its Client and this document does not exonerate parties to a transaction from exercising all their rights and obligations under the transaction documents. This document cannot be reproduced except in full, without prior written approval of the Company. Any unauthorized alteration, forgery or falsification of the content or appearance of this document is unlawful and offenders may be prosecuted to the fullest extent of the law. Unless otherwise stated the results shown in this test report refer only to the sample(s) tested.

Attention: To check the authenticity of testing /inspection report & certificate, please contact us at telephone: (86-755) 8307 1443, or email: CN.Doccheck@sgs.com

198 Kezhu Road, Science Park Guangzhou Economic & Technology Development District, Guangzhou, China 510663 t (86-20) 82155555 f (86-20) 82075113 www.sgs.com.cn
中国·广州·经济技术开发区科学城科珠路198号 邮编: 510663 t (86-20) 82155555 f (86-20) 82075113 e sgs.china@sgs.com

Test Report

No. CANEC1603619705

Date: 18 Mar 2016

Page 2 of 5

Test Results :

Test Part Description :

Specimen No.	SGS Sample ID	Description
SN1	CAN16-036197.003	Grey liquid

Remarks :

- (1) 1 mg/kg = 1 ppm = 0.0001%
- (2) MDL = Method Detection Limit
- (3) ND = Not Detected (< MDL)
- (4) "-" = Not Regulated

Tetrabromobisphenol A (TBBP-A)

Test Method : With reference to US EPA Method 3540C:1996, analysis was performed by GC-MS&HPLC-MS.

<u>Test Item(s)</u>	<u>Limit</u>	<u>Unit</u>	<u>MDL</u>	<u>003</u>
Tetrabromobisphenol A (TBBP-A)	-	mg/kg	10	ND

Remark : The result(s) shown is/are of the total weight of wet sample.



SGS-CSTC Standards Technical Services Co., Ltd.
Guangzhou Branch Testing Chemical Laboratory

Unless otherwise agreed in writing, this document is issued by the Company subject to its General Conditions of Service printed overleaf, available on request or accessible at <http://www.sgs.com/en/Terms-and-Conditions.aspx> and, for electronic format documents, subject to Terms and Conditions for Electronic Documents at <http://www.sgs.com/en/Terms-and-Conditions/Terms-e-Documents.aspx>. Attention is drawn to the limitation of liability, indemnification and jurisdiction issues defined therein. Any holder of this document is advised that information contained hereon reflects the Company's findings at the time of its intervention only and within the limits of Client's instructions, if any. The Company's sole responsibility is to its Client and this document does not exonerate parties to a transaction from exercising all their rights and obligations under the transaction documents. This document cannot be reproduced except in full, without prior written approval of the Company. Any unauthorized alteration, forgery or falsification of the content or appearance of this document is unlawful and offenders may be prosecuted to the fullest extent of the law. Unless otherwise stated the results shown in this test report refer only to the sample(s) tested.

Attention: To check the authenticity of testing /inspection report & certificate, please contact us at telephone: (86-755) 8307 1443, or email: CN.Doccheck@sgs.com

198 Kezhu Road, Science Park Guangzhou Economic & Technology Development District, Guangzhou, China 510663 t (86-20) 82155555 f (86-20) 82075113 www.sgsgroup.com.cn
中国·广州·经济技术开发区科学城科珠路198号 邮编: 510663 t (86-20) 82155555 f (86-20) 82075113 e sgs.china@sgs.com

Test Report

No. CANEC1603619705

Date: 18 Mar 2016

Page 3 of 5

REMARK:

A001(AC/ACNP), A002(ACN), A003, A004(AD), A005(APA/APANP), A006(APAC), A007, A101(APE), A350(PU), A351(APU), A410(PET), A500(PS), A501, A505(PS), A506(PSF), A521(PSNP), A522(PSD), A523(PSA), A525(UV), A555, A580, A582, A599(UV), A616(TPR), A617(TAR), A618(TCR), A619(THR), A620(TPRA), A810(SAC), A811(SAD), A812(SANC), C001(SLF), C002(SCA), C003(SCC), C004, C125, C266, C350(TPU), C355(PU), C430, C435, C438, C505(PS), C560, C800, F111(FA), G001(VD), G002(VDN), G003(PV/PVA), G004(PVAN), G005(VHC/VCK), G006(VGA/VCC), G007, G008(VT), G009(VP/VPA), G010(VPVN), G011(WVD), G012, G014(UV), G016(VDP), G017(VDP), G018(G01), G019(VDH), G020(TOTM), G021(LFL), G022(ACV), G023(VDL), G024(CTV), G025(VC), G120, G121, G122(DPE), G123[(ZPEVA), DPE(F)], G124(HPE), G125, G126(HH), G127, G128, G129, G130(MPE), G131, G132(PPB), G133, G150(WPE), G270, G272, G275(OPP), G276, G330(KA), G350(VPU), G358, G430(PETN), G431(PET), G432(PB), G433(VRD), G435(WVHC), G436, G437, G439, G449, G505, G510(MMA), G520(VK), G521(PUF), G542(#42), G600(#28), G650(#52), G707(T), G708(PT), G709(PL), G810(VL), G904(#29), G905(#35), S001(SB), S002(SBC), S003(SBD), S004(SBN), S006(SS), S007(SSN), S008(SA), S009(SL), S010(PA/SPA), S011, S015(WSB), S018(WCS), S019(BL), S020, S266(SPP), S350(SPL), S351(SPLA), S352(SPLC), S353(SPLE), S354(SPY), S355(PU), S357, S358, S440(SRD), S444(SPET), S505, S560(PSC), S580, S650(RP), S651(EVA), S652(SEVA), S653(PLGS), S800(NC), S816, S818, S886(SGT), S888(SG), S901(#5), S902(#7), S903(#45)-Color 01100(110), 10200(102), 10400(104), 20000(200), 20010, 20300(203), 20380, 20600(206), 20610, 20700(207), 20900(209), 21000(210), 22000, 22240, 23000, 30000(300), 30100(301), 30200(302), 30300(303), 30380(3038), 30400(304), 30600(306), 30700(307), 30730(3073), 30740(3074), 30800(308), 30910, 30970, 30980, 31400(314), 31500(315), 40100(401), 40200(402), 40300(403), 40310, 40400(404), 40600(406), 40700(407), 40800(408), 449, 50000(500), 50100(501), 50200(502), 50300(Conductive black), 60100(601), 60200(602), 70100(701), 70200, 80100(801), 80105, 90100(901), 90200(902), 21310(131), 31330(133), 31340(134), 31580(158), 31590(159), 41480(148), 61400(140), 01200(2000), 01300(4000)



Unless otherwise agreed in writing, this document is issued by the Company subject to its General Conditions of Service printed overleaf, available on request or accessible at <http://www.sgs.com/en/Terms-and-Conditions.aspx> and, for electronic format documents, subject to Terms and Conditions for Electronic Documents at <http://www.sgs.com/en/Terms-and-Conditions/Terms-e-Documents.aspx>. Attention is drawn to the limitation of liability, indemnification and jurisdiction issues defined therein. Any holder of this document is advised that information contained hereon reflects the Company's findings at the time of its intervention only and within the limits of Client's instructions, if any. The Company's sole responsibility is to its Client and this document does not exonerate parties to a transaction from exercising all their rights and obligations under the transaction documents. This document cannot be reproduced except in full, without prior written approval of the Company. Any unauthorized alteration, forgery or falsification of the content or appearance of this document is unlawful and offenders may be prosecuted to the fullest extent of the law. Unless otherwise stated the results shown in this test report refer only to the sample(s) tested.

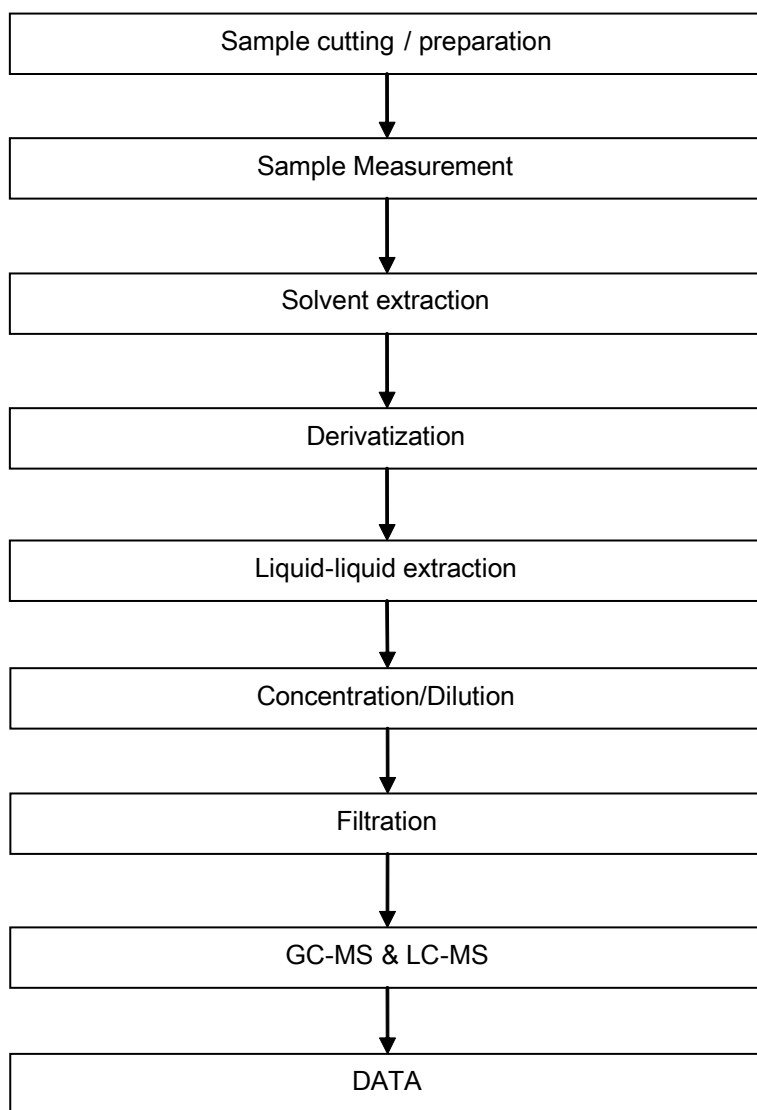
Attention: To check the authenticity of testing / inspection report & certificate, please contact us at telephone: (86-755) 8307 1443, or email: CN.Doccheck@sgs.com

198 Kezhu Road, Science Park Guangzhou Economic & Technology Development District, Guangzhou, China 510663 t (86-20) 82155555 f (86-20) 82075113 www.sgsgroup.com.cn
中国·广州·经济技术开发区科学城科珠路198号 邮编: 510663 t (86-20) 82155555 f (86-20) 82075113 e sgs.china@sgs.com

ATTACHMENTS

TBBP-A Testing Flow Chart

- 1) Name of the person who made testing: Erin Guo
- 2) Name of the person in charge of testing: Cutey Yu



Test Report

No. CANEC1603619705

Date: 18 Mar 2016

Page 5 of 5

Sample photo:



SGS authenticate the photo on original report only

*** End of Report ***