

# Test Report

**Report No.** SCL01H08334900401

Page 1 of 6

**Applicant** ZHANGZHOU YINMEI PRINTING INK CO., LTD

**Address** DONGCHE VILLAGE, HUOTIAN TOWN, YUNXIAO COUNTY,  
ZHANGZHOU CITY, FUJIAN PROVINCE, CHINA

**The following sample(s) and sample information was/were submitted and identified by/on the behalf of the client**

Sample Name INK  
Part No. G432  
Color 50200  
Sample Received Date Sep. 24, 2015  
Testing Period Sep. 24, 2015 to Sep. 30, 2015

**Test Requested** As specified by client, to test Lead (Pb), Cadmium (Cd), Mercury (Hg), Hexavalent Chromium(Cr(VI)), Polybrominated Biphenyl(PBBs), Polybrominated Diphenyl Ethers(PBDEs), Phthalates(DBP, BBP, DEHP, DIBP) in the submitted sample(s).

**Test Method** Please refer to the following page(s).

**Test Result(s)** Please refer to the following page(s).



*Danny Liu*  
\_\_\_\_\_  
Technical Manager  
Group Co.,Ltd.

Reviewed by *Cathy*  
\_\_\_\_\_  
Date Sep. 30, 2015  
\_\_\_\_\_

No. R158921226

Hongwei Industrial Zone, Bao'an 70 District, Shenzhen, Guangdong, China

# Test Report

Report No. SCL01H08334900401

Page 2 of 6

## Test Method

Test Item(s)	Test Method	Measured Equipment(s)
Lead (Pb)	IEC 62321-5:2013 Ed.1.0	ICP-OES
Cadmium (Cd)	IEC 62321-5:2013 Ed.1.0	ICP-OES
Mercury (Hg)	IEC 62321-4:2013 Ed.1.0	ICP-OES
Hexavalent Chromium(Cr(VI))	IEC 62321:2008 Ed.1 Annex C	UV-Vis
Polybrominated Biphenyl(PBBs)	IEC 62321:2008 Ed.1 Annex A	GC-MS
Polybrominated Diphenyl Ethers(PBDEs)	IEC 62321:2008 Ed.1 Annex A	GC-MS
Phthalates(DBP, BBP, DEHP, DIBP)	Refer to EN 14372:2004(E)	GC-MS

## Test Result(s)

Tested Item(s)	Result	MDL
Lead (Pb)	N.D.	2 mg/kg
Cadmium (Cd)	N.D.	2 mg/kg
Mercury (Hg)	N.D.	2 mg/kg
Hexavalent Chromium (Cr(VI))	N.D.	2 mg/kg

Tested Item(s)	Result	MDL
<b>Polybrominated Biphenyl(PBBs)</b>		
Monobromobiphenyl	N.D.	5 mg/kg
Dibromobiphenyl	N.D.	5 mg/kg
Tribromobiphenyl	N.D.	5 mg/kg
Tetrabromobiphenyl	N.D.	5 mg/kg
Pentabromobiphenyl	N.D.	5 mg/kg
Hexabromobiphenyl	N.D.	5 mg/kg
Heptabromobiphenyl	N.D.	5 mg/kg
Octabromobiphenyl	N.D.	5 mg/kg
Nonabromobiphenyl	N.D.	5 mg/kg
Decabromobiphenyl	N.D.	5 mg/kg

# Test Report

Report No. SCL01H08334900401

Page 3 of 6

Tested Item(s)	Result	MDL
<b>Polybrominated Diphenyl Ethers(PBDEs)</b>		
Monobromodiphenyl ether	N.D.	5 mg/kg
Dibromodiphenyl ether	N.D.	5 mg/kg
Tribromodiphenyl ether	N.D.	5 mg/kg
Tetrabromodiphenyl ether	N.D.	5 mg/kg
Pentabromodiphenyl ether	N.D.	5 mg/kg
Hexabromodiphenyl ether	N.D.	5 mg/kg
Heptabromodiphenyl ether	N.D.	5 mg/kg
Octabromodiphenyl ether	N.D.	5 mg/kg
Nonabromodiphenyl ether	N.D.	5 mg/kg
Decabromodiphenyl ether	N.D.	5 mg/kg

Tested Item(s)	Result	MDL
<b>Phthalates</b>		
Dibutyl phthalate(DBP) CAS#:84-74-2	N.D.	50 mg/kg
Butylbenzyl phthalate(BBP) CAS#:85-68-7	N.D.	50 mg/kg
Di-2-ethylhexyl phthalate(DEHP) CAS#:117-81-7	N.D.	50 mg/kg
Diisobutyl phthalate(DIBP) CAS#:84-69-5	N.D.	50 mg/kg

**Tested Sample/Part Description** Black liquid

**Remark:** The sample(s) had been dissolved totally tested for Lead, Cadmium, Mercury.

-MDL = Method Detection Limit

-N.D. = Not Detected (&lt;MDL)

-mg/kg = ppm = parts per million

-The test result(s) is(are) presented in reference to the result(s) that reported in SCL01H083349004.

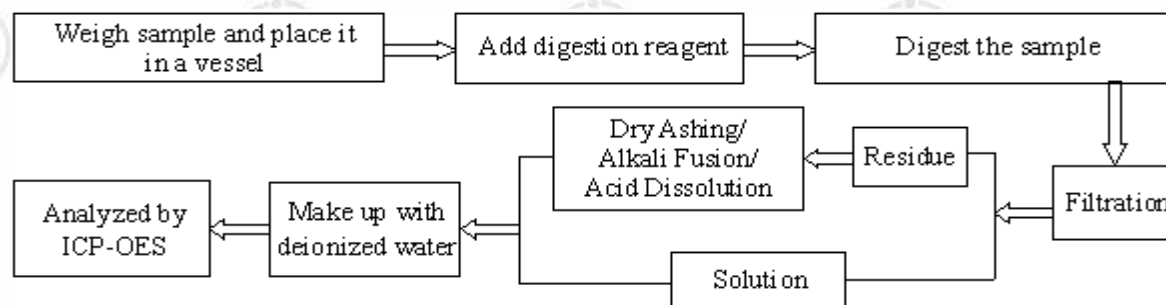
# Test Report

Report No. SCL01H08334900401

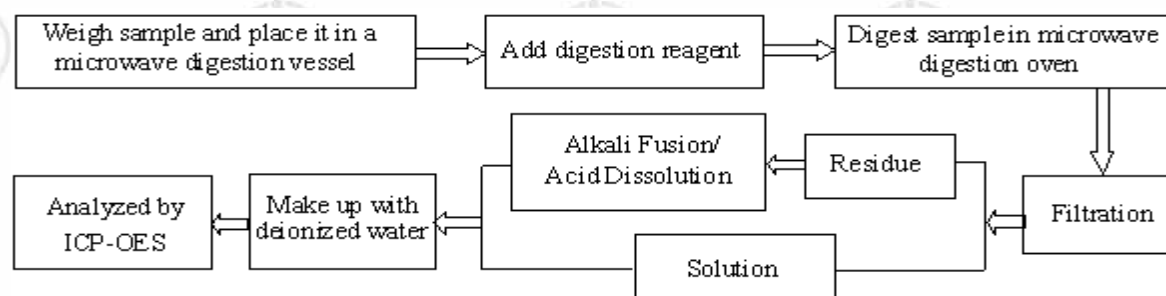
Page 4 of 6

## Test Process

### 1. Lead (Pb), Cadmium (Cd)



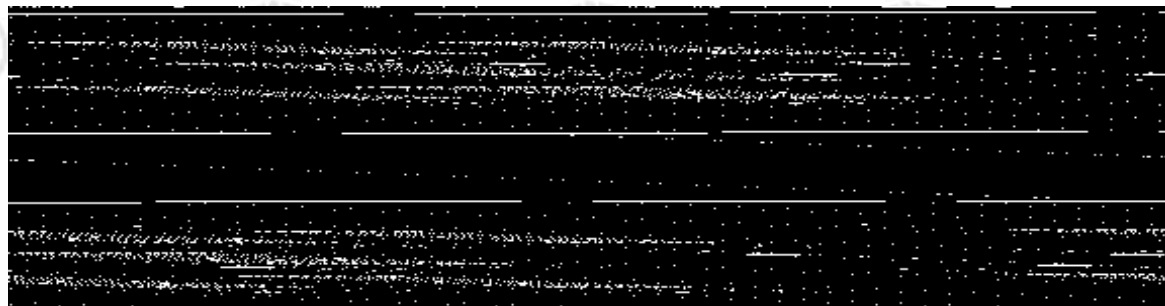
### 2. Mercury (Hg)



### 3. Hexavalent Chromium(Cr(VI))



### 4. Phthalates(DBP, BBP, DEHP, DIBP)



# Test Report

Report No. SCL01H08334900401

Page 5 of 6

## 5. Polybrominated Biphenyl(PBBs) , Polybrominated Diphenyl Ethers(PBDEs)

