

## Test Report

No. CANEC1101195601

Date: 09 Apr 2011

Page 1 of 4

DONGGUAN IN MEI COATING CO.,LTD

TIANXIN AREA, HUANGJIANG TOWN, DONGGUAN CITY, GUANGDONG PROVINCE CHINA

The following sample(s) was/were submitted and identified on behalf of the clients as :

G432(PB)-中干水

SGS Job No. : 13045482 - SZ

Date of Sample Received : 02 Apr 2011

Testing Period : 02 Apr 2011 - 09 Apr 2011

Test Requested : Selected test(s) as requested by client.

Test Method : Please refer to next page(s).

Test Results : Please refer to next page(s).

Conclusion : Based on the performed tests on submitted sample(s), the results **comply with** the RoHS Directive 2002/95/EC and its subsequent amendments.

Signed for and on behalf of  
SGS-CSTC Ltd.



Trophy Zhang  
Approved Signatory

This document is issued by the Company subject to its General Conditions of Service printed overleaf, available on request or accessible at [http://www.sgs.com/terms\\_and\\_conditions.htm](http://www.sgs.com/terms_and_conditions.htm) and, for electronic format documents, subject to Terms and Conditions for Electronic Documents at [www.sgs.com/terms\\_e-document.htm](http://www.sgs.com/terms_e-document.htm). Attention is drawn to the limitation of liability, indemnification and jurisdiction issues defined therein. Any holder of this document is advised that information contained hereon reflects the Company's findings at the time of its interpretation only and within the limits of Client's instructions, if any. The Company's sole responsibility is to its Client and this document does not exonerate parties to a transaction from exercising all their rights and obligations under the transaction documents. This document cannot be reproduced except in full, without prior written approval of the Company. Any unauthorized alteration, forgery or falsification of the content or appearance of this document is unlawful and offenders may be prosecuted to the fullest extent of the law. Unless otherwise stated, the results shown in this test report refer only to the sample(s) tested.

# Test Report

No. CANEC1101195601

Date: 09 Apr 2011

Page 2 of 4

## Test Results:

ID for specimen 1 : CAN11-011956.001  
Description for specimen 1 : Transparent liquid

## RoHS Directive 2002/95/EC

Test Item(s)	Unit	Test Method (Reference)	Result	MDL	Limit
Cadmium (Cd)	mg/kg	IEC 62321:2008, ICP-OES	N.D.	2	100
Lead (Pb)	mg/kg	IEC 62321:2008, ICP-OES	N.D.	2	1000
Mercury (Hg)	mg/kg	IEC 62321:2008, ICP-OES	N.D.	2	1000
Hexavalent Chromium (CrVI) by alkaline extraction	mg/kg	IEC 62321:2008, UV-Vis	N.D.	2	1000
Sum of PBBs	mg/kg	-	N.D.	-	1000
Monobromobiphenyl	mg/kg	IEC 62321:2008, GC-MS	N.D.	5	
Dibromobiphenyl	mg/kg	IEC 62321:2008, GC-MS	N.D.	5	
Tribromobiphenyl	mg/kg	IEC 62321:2008, GC-MS	N.D.	5	
Tetrabromobiphenyl	mg/kg	IEC 62321:2008, GC-MS	N.D.	5	
Pentabromobiphenyl	mg/kg	IEC 62321:2008, GC-MS	N.D.	5	
Hexabromobiphenyl	mg/kg	IEC 62321:2008, GC-MS	N.D.	5	
Heptabromobiphenyl	mg/kg	IEC 62321:2008, GC-MS	N.D.	5	
Octabromobiphenyl	mg/kg	IEC 62321:2008, GC-MS	N.D.	5	
Nonabromobiphenyl	mg/kg	IEC 62321:2008, GC-MS	N.D.	5	
Decabromobiphenyl	mg/kg	IEC 62321:2008, GC-MS	N.D.	5	
Sum of PBDEs	mg/kg	-	N.D.	-	1000
Monobromodiphenyl ether	mg/kg	IEC 62321:2008, GC-MS	N.D.	5	
Dibromodiphenyl ether	mg/kg	IEC 62321:2008, GC-MS	N.D.	5	
Tribromodiphenyl ether	mg/kg	IEC 62321:2008, GC-MS	N.D.	5	
Tetrabromodiphenyl ether	mg/kg	IEC 62321:2008, GC-MS	N.D.	5	
Pentabromodiphenyl ether	mg/kg	IEC 62321:2008, GC-MS	N.D.	5	
Hexabromodiphenyl ether	mg/kg	IEC 62321:2008, GC-MS	N.D.	5	
Heptabromodiphenyl ether	mg/kg	IEC 62321:2008, GC-MS	N.D.	5	
Octabromodiphenyl ether	mg/kg	IEC 62321:2008, GC-MS	N.D.	5	
Nonabromodiphenyl ether	mg/kg	IEC 62321:2008, GC-MS	N.D.	5	
Decabromodiphenyl ether	mg/kg	IEC 62321:2008, GC-MS	N.D.	5	

## Note:

1. mg/kg = ppm
2. N.D. = Not Detected (< MDL)
3. MDL = Method Detection Limit
4. "-" = Not regulated

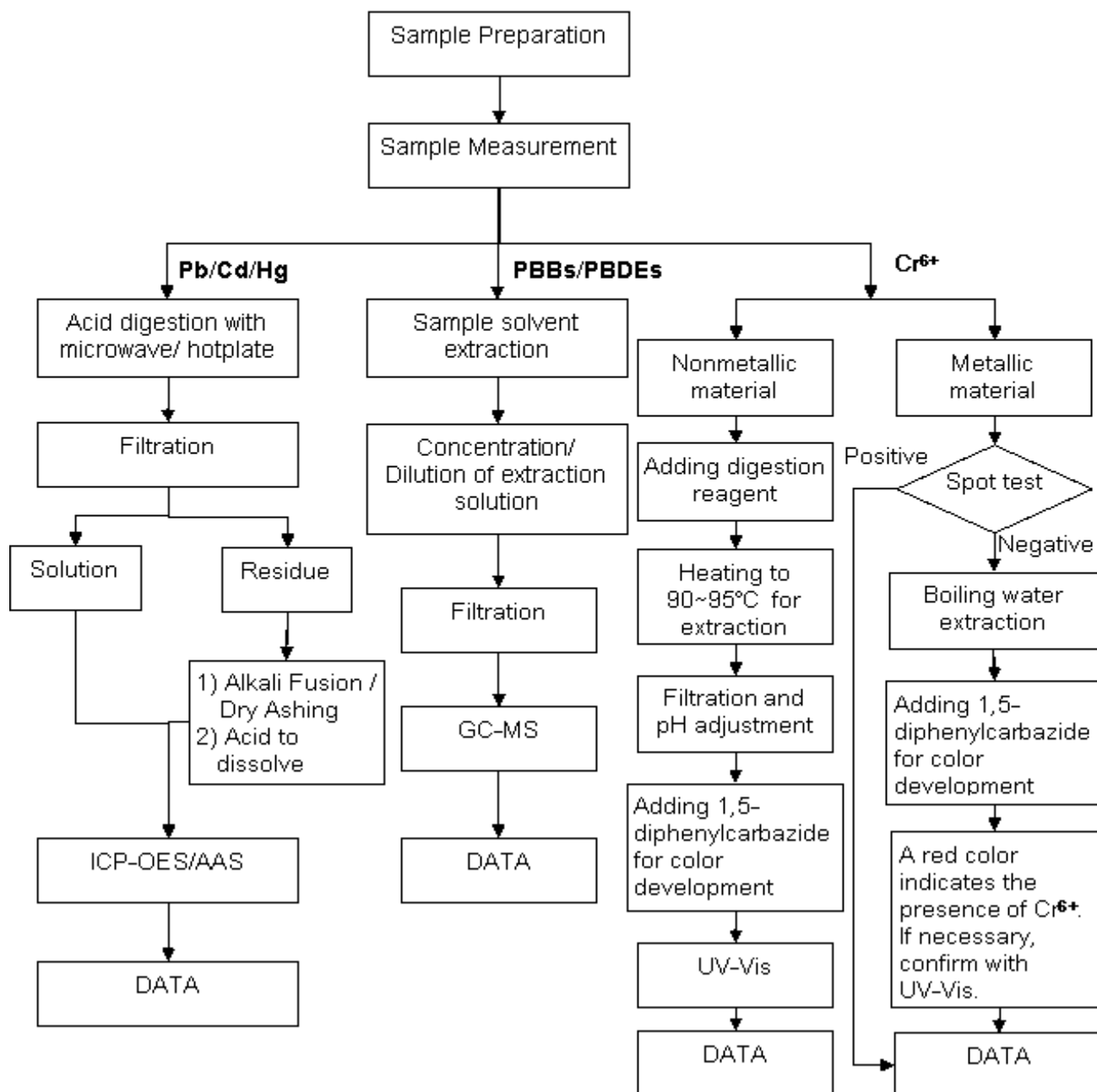
Remark : The result(s) shown is/are of the total weight of wet sample.

This document is issued by the Company subject to its General Conditions of Service printed overleaf, available on request or accessible at [http://www.sgs.com/terms\\_and\\_conditions.htm](http://www.sgs.com/terms_and_conditions.htm) and, for electronic format documents, subject to Terms and Conditions for Electronic Documents at [www.sgs.com/terms\\_e-document.htm](http://www.sgs.com/terms_e-document.htm). Attention is drawn to the limitation of liability, indemnification and jurisdiction issues defined therein. Any holder of this document is advised that information contained hereon reflects the Company's findings at the time of its preparation only and within the limits of Client's instructions, if any. The Company's sole responsibility is to its Client and this document does not exonerate parties to a transaction from exercising all their rights and obligations under the transaction documents. This document cannot be reproduced except in full, without prior written approval of the Company. Any unauthorized alteration, forgery or falsification of the content or appearance of this document is unlawful and offenders may be prosecuted to the fullest extent of the law. Unless otherwise stated, the results shown in this test report refer only to the sample(s) tested.

### ATTACHMENTS

#### RoHS Testing Flow Chart

- 1) Name of the person who made testing: Bella Wang / Cutey Yu / Ross Zhan
- 2) Name of the person in charge of testing: Adams Yu / Ryan Yang
- 3) These samples were dissolved totally by pre-conditioning method according to below flow chart (Cr6+ and PBBs/PBDEs test method excluded).



This document is issued by the Company subject to its General Conditions of Service printed overleaf, available on request or accessible at [http://www.sgs.com/terms\\_and\\_conditions.htm](http://www.sgs.com/terms_and_conditions.htm) and, for electronic format documents, subject to Terms and Conditions for Electronic Documents at [www.sgs.com/terms\\_e-document.htm](http://www.sgs.com/terms_e-document.htm). Attention is drawn to the limitation of liability, indemnification and jurisdiction issues defined therein. Any holder of this document is advised that information contained hereon reflects the Company's findings at the time of its preparation only and within the limits of Client's instructions, if any. The Company's sole responsibility is to its Client and this document does not exonerate parties to a transaction from exercising all their rights and obligations under the transaction documents. This document cannot be reproduced except in full, without prior written approval of the Company. Any unauthorized alteration, forgery or falsification of the content or appearance of this document is unlawful and offenders may be prosecuted to the fullest extent of the law. Unless otherwise stated, the results shown in this test report refer only to the sample(s) tested.

## Test Report

No. CANEC1101195601

Date: 09 Apr 2011

Page 4 of 4

Sample photo:



SGS authenticate the photo on original report only

\*\*\* End of Report \*\*\*

This document is issued by the Company subject to its General Conditions of Service printed overleaf, available on request or accessible at [http://www.sgs.com/terms\\_and\\_conditions.htm](http://www.sgs.com/terms_and_conditions.htm) and, for electronic format documents, subject to Terms and Conditions for Electronic Documents at [www.sgs.com/terms\\_e-document.htm](http://www.sgs.com/terms_e-document.htm). Attention is drawn to the limitation of liability, indemnification and jurisdiction issues defined therein. Any holder of this document is advised that information contained hereon reflects the Company's findings at the time of its interpretation only and within the limits of Client's instructions, if any. The Company's sole responsibility is to its Client and this document does not exonerate parties to a transaction from exercising all their rights and obligations under the transaction documents. This document cannot be reproduced except in full, without prior written approval of the Company. Any unauthorized alteration, forgery or falsification of the content or appearance of this document is unlawful and offenders may be prosecuted to the fullest extent of the law. Unless otherwise stated the results shown in this test report refer only to the sample(s) tested.